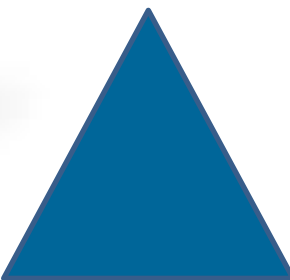
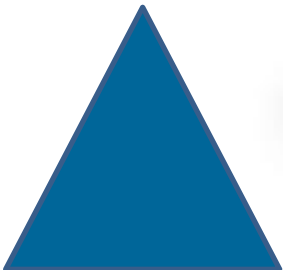
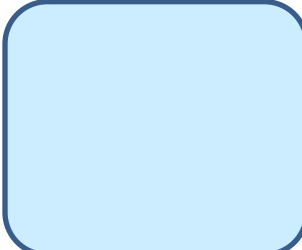


# GLOBAL TECHNICAL RESOURCES



# COMPANY PROFILE

# INTRODUCTION

One of the leading trading houses and a broad line supplier of all types of Industrial materials and facilities maintenance serving businesses organizations and institutions throughout the World with offices in India, and GCC Countries. By providing competent advice, regardless of customer's industry, the materials involved and the manufacturing processes, technologies and competencies under one roof and offers its customers individual solutions.

## OUR RANGE OF PRODUCTS ARE:

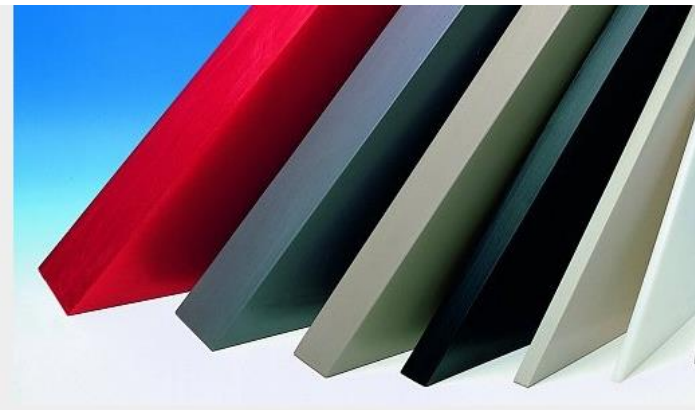
Mechanical items  
Electrical Items  
Power Transmission  
Tools & Test instruments  
Metal working & welding supplies  
Material Handling  
Cleaning & Painting  
Safety & Security  
Pneumatics & Hydraulics  
HVAC Materials  
Engineering Plastics, PE, PP, PVC, PVDF Sheets,  
Rods & Welding Rods.  
Electrofusion Fittings  
Hardwares  
Clicking Boards for Leather Industry  
Gears, Gearboxes  
Aluminum Alloys  
Roller chains  
Sprockets  
Chain Drives  
Conveyor chains  
Clutches  
Tools  
U-Joints  
Couplings & Conveyor pulleys  
Bearings.  
Hoses  
Overload Torque Limiting Devices  
Steel Bars/Rods  
Special grade Aluminum used for molds and special applications  
Test and Measuring instruments.  
Acid resistant ball valves which can be used with pneumatic and electrical actuators.  
SS Tubes, CS Tubes, CS Pipes, SS Plates etc.....



# PRODUCT - POLYSTONE

We have a versatile and extensive product range of thermoplastics that offers you a universal scope of application. Our range of supply is a composition of engineering and high performance plastics. In addition to a numerous standard types, we offer you a wide variety of material modifications, tailored to your specific application. On the basis of these materials, we encompasses the following products

1. Extruded Semi finished products
2. Form polymerised semi finished products
3. Films
4. Extruded profiles
5. Special components, cast
6. Moulded products, cast



Dealing with all types of PP, PE, PVC, PVF, Nylon, and Teflon (PTFE) Extruded sheets with a width of 3000mm and 0.8 to 50mm thickness and pressed sheets with a size of 6000mm X 2500mm with 1 to 200 mm thickness. All are available in various colours. All types of rods are available up to 300 mm dia.



# Sheets, Rods and Welding Rods

- Extruded square tubes and U-profiles are available with various shapes which can be used in all types of conveying systems especially in Bottling plants, packaging industry, and chemical industries.
- Dealing with extruded welding rods with various shapes. Round, Triangular etc...



Sliding and conveyor parts made of Polystone® M



## Extruded Profiles

These profiles are used in all bottling plants

## Extruded Profiles



PP, PE, PVC,  
PVDF Welding Rods



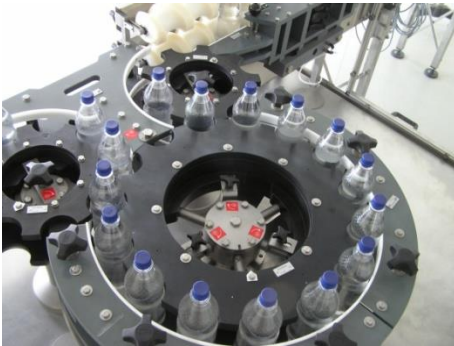
PP, PE, PVC,  
PVDF Sheets



PVC, HDPE,  
NYLON Rods

# Application in Bottling Plants & Packaging Industry

Bottling & Packing industry have been using thermoplastic components for many years. Excellent wear and abrasion resistance high resistance to chemicals and no water absorption are outstanding features of polystone. The Ultra High Molecular Weight Polyethylene (UHMW) provides an effective material for the following:



Star Wheel  
Conveyor Stars



Chain & Curve Guides & Extruded profiles  
made to your drawings or samples



Conveyor Stars



Bottle Guides

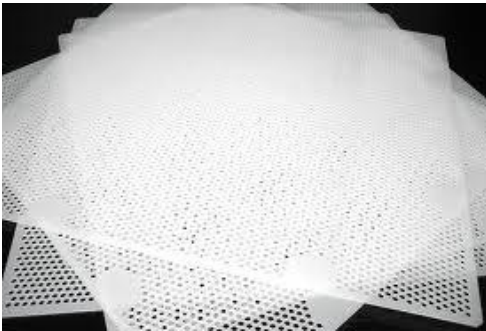
Polystone is ideal for a multitude of different engineering components like guide rails, deflectors, pile driver rams, guides, conveyor tubes etc.

The products are physiologically safe, water repellent excellent resistance to friction, scoring and scratches, resistant to both acid and alkalies.

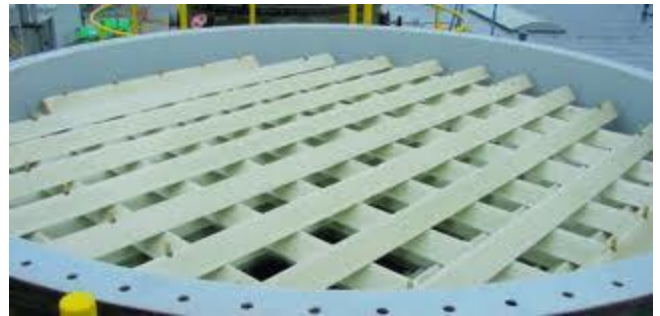


# Application in General

The special properties of effective polystone material UHMW makes polystone ideal for numerous building and construction applications including fields like Wear strips in shop fittings, fenders in harbours and ports, surrounds for ice rinks, lining sheets for bulk handling plant



PVDF Mesh



PP Settling Tank

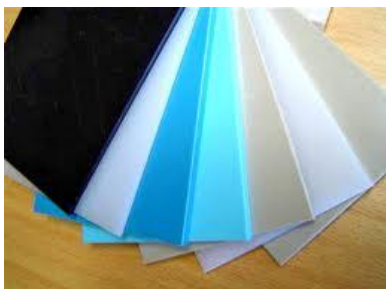


Cost effective swimming Pools small recreation clubs, schools, Houses etc



Durostone Nuts & Bolts

Corrosion resistant nuts & bolts for all industrial solutions



Shades of colours  
For swimming pools

# Application in General (Contd..)

## Electronic Industry

1. Heavy Machine Construction
2. Wound support rings
3. Threaded rods and nuts
4. Slot wedges
5. Pressure rings
6. Insulating clamps



## Electronic Industry

1. Switchgear and Transformer Engineering
2. Bus bar supports
3. Threaded rods and nuts
4. Bulkheads
5. Cable supports
6. Switch gears, wipers
7. Lead-through boards

## Chemical Industry

1. Slides
2. Covers
3. Pipes for guard-rail-systems
4. Beam systems
5. Edge ships
6. Pedestals
7. Anode support plates



## Other Areas

Nuclear energy  
Medical engineering  
Cryogenic engineering  
Printing industry  
Drives and handling equipment  
Sport and leisure  
Defense engineering  
Mining  
Forestry and agriculture



## Highway and Railway Engineering

1. Section insulators/Loop insulators
2. Insulating pipes/ Insulation fishplates
3. Bracket arms
4. Threaded rods and nuts

## Railway Engineering

1. Pultruded sections for fixed
2. Mobile cooling cells
3. Vouten covers
4. Roof and side sections
5. Cable and air conditioning
6. Interior and exterior panels and claddings
7. Window and door frame covers

## Plant Construction

1. Components for cooling towers
2. Loadbearing parts
3. Retaining and connecting sections
4. Heat-resistant insulating parts for building industrial furnaces

## Mechanical Engineering

1. Threaded rods
2. Nuts, Springs
3. Strips and rails
4. Guides, Rollers
5. Bearings, Gears

# Application in General (Contd..)

## General Applications

1. Building and Ventilation Industry
2. Wear strips in shop fittings
3. Fenders in harbours and ports
4. Surrounds for ice rinks
5. Linings for bulk handling plants

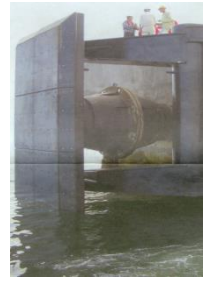


## Fenders in Harbours & ports

On-board fender system on floating dredger, Polystone protects the ship's hull from damage



Even energy absorption: PM fender (Parallel fender) with Polystone guarantees best protection for mooring ships



## Polystone® has the following properties:

1. Physiologically safe
2. Water-repellent
3. Excellent resistance to friction, scoring and scratches
4. Acid and Alkali Resistant
5. Does not dull knives

## Bottling and Packaging Industry

1. Chaud and curve guides
2. Conveyor stars
3. Extruded profiles ex-stock or made to drawings or samples



## Mechanical Engineering

1. Guide rails
2. Deflectors
3. Pile driver rams
4. Guides
5. Conveyor tubs

## Materials Handling

1. Chain guides
2. Slide guides and industrial Details
3. Driving pins
4. Deflectors
5. Extruded profiles ex-stock or according to drawings or samples
6. Sheets and rods





# Customized Products in Polystone

We machine the customized products as per the requirement of our clients. Samples are displayed below. We manufactured cathode anode separator for stainless steel plants in GCC.



CATHODE –ANODE SEPERATOR in PVC



Small PP tanks manufactured for Universities in GCC



Pipe sealings fabricated for Pipe companies in GCC

Engineering plastics are outstanding for special properties which enable them to be used in the most varied fields.

The precautions for the correct, application related choice of material are knowledge of materials and a regular exchange of experience.



Oil rings manufactured for GCC plants

# Application in Water & Waste water Industries

Our high effective materials, polystone, polypropylene, and polyethylene are ideally suited For both large and small components for equipment machines, plant and appliances and in particular, very large sheets for the construction of tanks in water, chemical and waste disposal industries. The following properties make them particular useful



## **Plastics for direct contact with foodstuffs acc. 1935/2004/EG**

Especially for the Food Industry Röchling offers a broad spectrum of standard plastics right up to high-temperature plastics for direct contact with foodstuffs. They comply with the requirements of the new EU regulations 1935/2004/EC, 10/2011/EU as well as 2023/2006/EC.

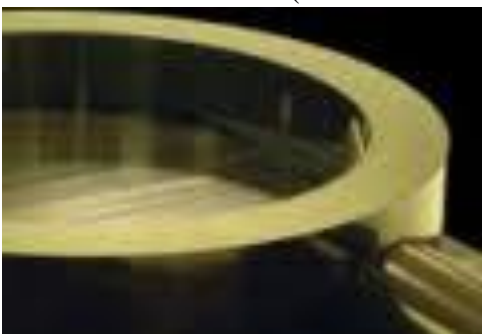
The materials listed below do not have a negative impact on the composition, taste, aroma or appearance of the food and this on the health of consumers.

You can therefore rest assured that the tested plastics are valid as suitable for contact with all kinds of foodstuffs corresponding to our declarations of compliance.

In terms of foodstuffs, the regulation differentiates between:

- dry
- aqueous
- acidic
- fatty
- alcoholic

Our production processes are subjected to the philosophy “Good Manufacturing Practice“ (2023/2006/EC).



# Tank Fabrication

We also fabricate PP, PE, FRP & PVC tanks



CPVC FRP 50M3 Hypo TANK



CPVC FRP 50M3 Hypo TANK



PP (Polypropylene)  
50M3 ACID TANKS



PVDF FRP 20M3 Chlorate Tank

# PVDF Tank Lining

Specialized chemical tank lining with PVDF, PP, HDPE materials to make them corrosion and chemical resistant.



# Tank Lining (Contd..)

Fire fighting tanks will be lined with PP materials to make them chemical resistant.



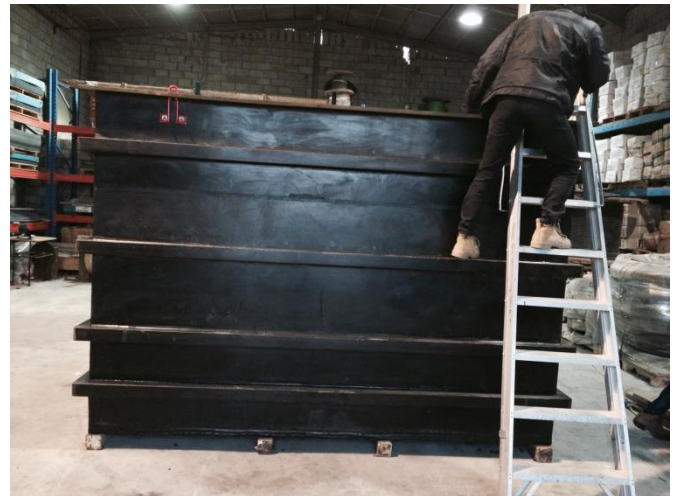
Fire Fighting Tank Lining



PVDF Tank Lining



PP TANK FABRICATED FOR FIRE FIGHTING VEHICLES



HDPE TANK REPAIRED AND FABRICATED IN KSA

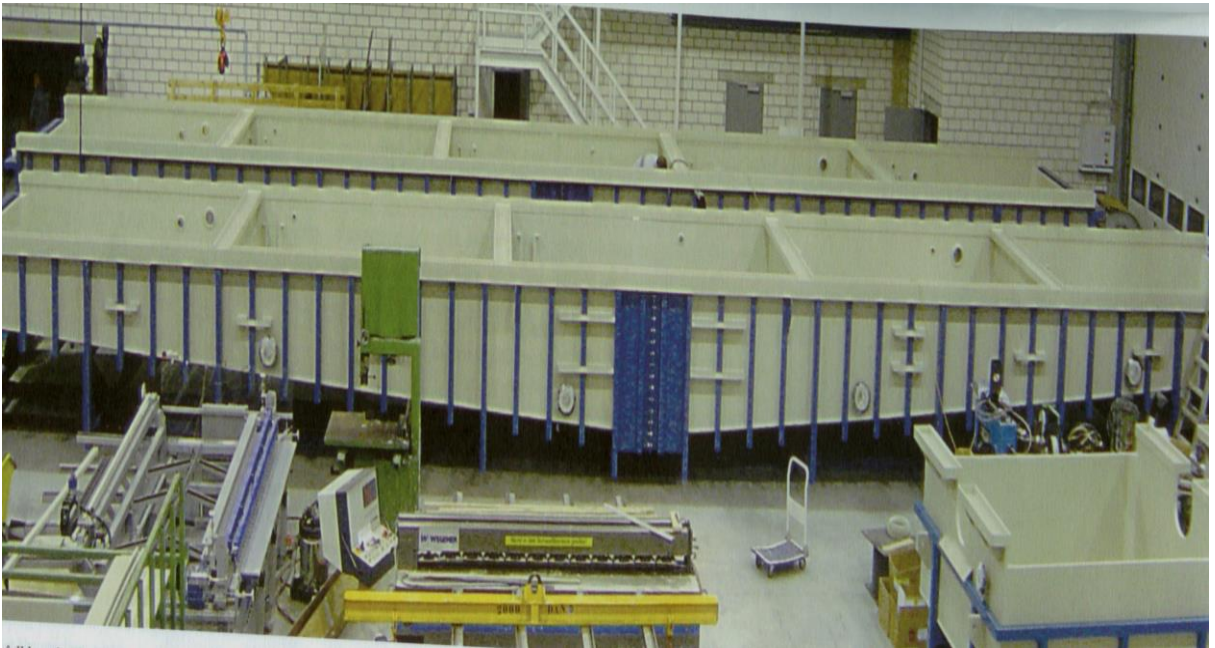
# Pickling Tanks for Steel Plants



PPH PICKLING TANKS



PPH CHEMICAL TANKS



21 meter long pickling immersion tank

We fabricate a wide range of pickling tanks for steel plants and galvanising plants in GCC. Also, we do the lining of floors with PP sheets



ELECTRO PICKLING TANK

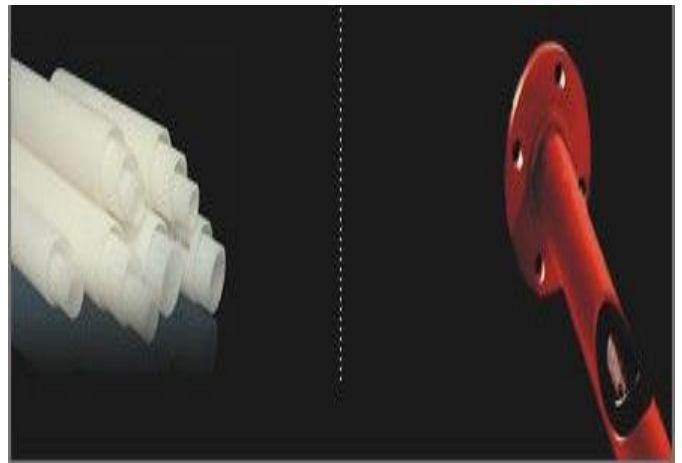
# Customized Products



CHEMICAL RESISTANT  
TANKS



CHEMICAL RESISTANT EXHAUST DUCTS  
FOR ALL CHEMICAL PLANTS



PVDF FITTINGS AND WELDINGS

# Customized Products



PVDF Fittings



PVDF Fittings

Any customized parts can be prepared or machined either in small quantity or in bulk as per the specification or drawing of the customer. Some of the examples are as follows.



Titanium Nuts & Bolts



PVC Bushings

## PRODUCTS FOR MARINE APPLICATIONS

We produce, machine and mould many marine application products in thermoplastics for corrosion resistance



PVC Bushings



# Customized Products

## CAKE WASH BOXES

We fabricate the customized cake wash boxes in PP,PVC,HDPE & PVDF etc for chemical applications.



## CHEMICAL RESISTANT NOZZLES

Manufacturing of chemical resistant NOZZLES as per the requirement of customers

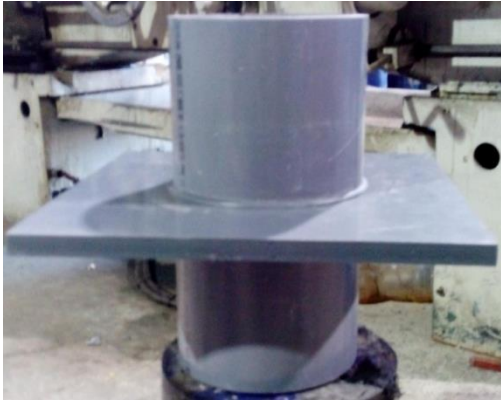


## CS/SS TANK LININGS

Lining of CS, SS tanks in PP,PVC, HDPE & PVDF etc for chemical storage applications



# Customized Products



## PUDDLE FLANGES

Fabrication of the puddle flanges in PP,PVC,HDPE & PVDF etc for chemical applications



## FRP COATED PVDF PIPES & FITTINGS

We fabricate FRP coated PVDF pipes and fittings for chemical & petrochemical plants

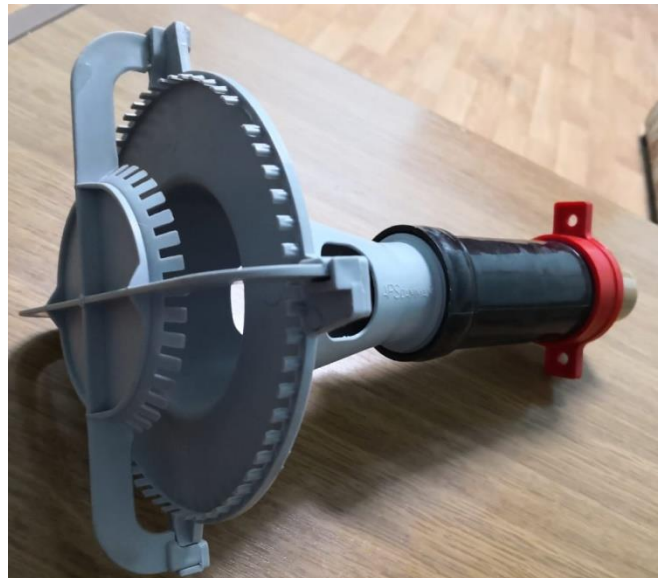
## NOZZLES & HDPE PARTS

Molding of Nozzles and HDPE Parts



## MOLDING, MACHINING & FABRICATION

Molding, Machining & fabrication of all types of plastic components viz. HDPE, PP, PVC, PVDF, TEFLON, NYLON, ERTHALON etc. For chemical, petrochemical industries & for all industries

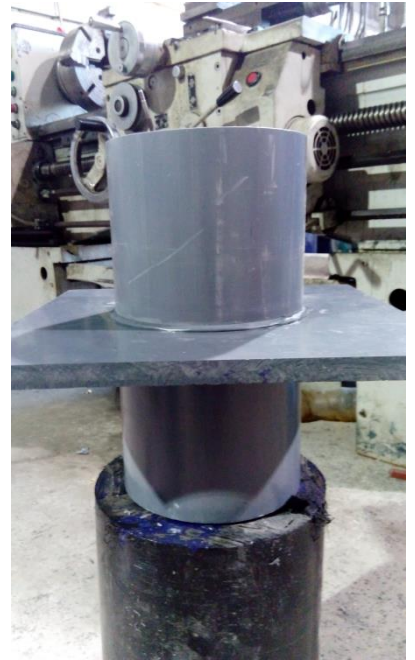


# Customized Products

**SMALL CHEMICAL TANKS**  
In HDPE, PP, PVC, PVDF



**HDPE PIPE SPOOLS AS PER CUSTOMER REQUIREMENT**



# Floating Balls or Bird Balls

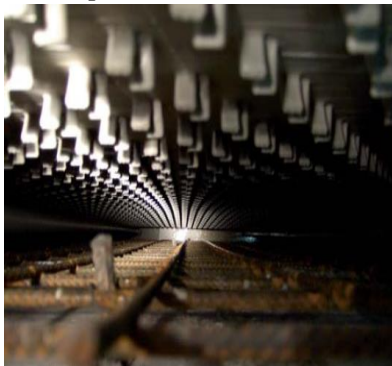


- ✓ This balls are used to mask or hide the water ponds,
- ✓ waste water ponds poisonous waste waster ponds,
- ✓ Leaching pads, water collection area etc. from all type of birds and animals at airports,
- ✓ Manufactured in HDPE with UV resistant materials to prevent the wear and tear.
- ✓ Floats as per the level of the liquid.
- ✓ Prevents evaporation of water by direct sunlight.
- ✓ Prevents the odors from the waste water ponds and lagoons.
- ✓ Safe for the fishes and wildlife.
- ✓ It is used near airport water collection area to avoid bird hit to aircraft.
- ✓ Partially water filled balls also can be supplied.

# Tank & Floor Linings

With the introduction of mechanically anchored thermoplastic lining systems, we have considerably expanded the selection of materials in the field of industrial corrosion protection. Interlocking a thermoplastic lining that is highly resistant to chemical and corrosive attack with concrete, a material that can withstand extreme static loads, brings about an ideal synergistic combination of stability, reliability and durability. Thermoplastics have a high chemical resistance, can be subjected to mechanical loads and are also impervious to biogenic corrosion. Welded to form a gas and water-proof surface, the smooth, anti-adhesive finish offers very little friction and prevents incrustations. These lining systems are easy to install, can be tested reproducibly and, if damaged, can also be repaired easily.

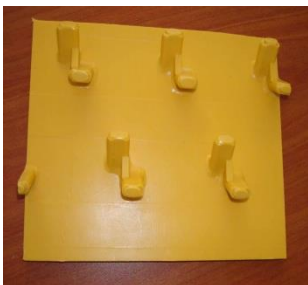
The materials utilised, i.e. polyethylene (PE-HD), polypropylene (PP), polyvinylidene fluoride (PVDF), or polyvinyl chloride (PVC) are available in various *Sewage pipe system completely lined with mechanically anchored thermoplastic materials.*



## The advantages of thermoplastic

Lining concrete structures with one of our several chemical resistant thermoplastics, depending on the thermoplastic material used offers many advantages over other types of lining systems:

1. High pullout resistance up to 42t/m<sup>2</sup>
2. High shear resistance
3. High back pressure resistance
4. Optimized anchoring in all directions
5. Suitable for grouting in rehab applications
6. Highly resistant to impact and abrasion .
7. Excellent chemical resistance.
8. Suitable for food industry use.
9. Significant flexibility for bridging concrete cracks.
10. Long service life and low maintenance
11. Wide temperature range and UV –resistance
12. Integral, mechanical anchoring system provides perfect bonding to the concrete



# Tank & Floor Linings (Contd.)

We do the lining of concrete and steel tanks, floors and trenches with HDPE, PP sheets to make them corrosion resistant, especially where the acids spilling is occurred. The sheets are mounted to the castform-system. The steel reinforcement is put in place once the liners have been secured to the forms and afterwards the outer formwork is erected.

Then the concrete is poured. After adequate curing of the concrete the formwork is removed and the seaming using extrusion technique is executed and tested.



Steel Tank Lining Sample

## **This technology is suitable for**

1. Lining of new structures cast in site and precast
2. Relining of existing structures



## **Relining of structures**

The technique applicable for near all structures independent of the corrosion progress. The sheets can be fixed to profiles or to a formwork inside. The liners are joined using extrusion technique.

Depending on the gap between the liner and existing structure a non-shrinkage grout or concrete is poured. During the pouring and curing the liner is supported by formwork and after removal tested.

## **Range of Application**

The concrete protective liner systems of HDPE, PP, PVDF, ECTFE are used for concrete protection, water proofing, and environmental containment.



TANK LININGS WITH PP

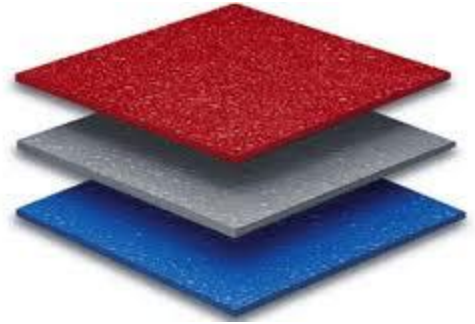
## **Whether new construction or retrofit**

1. Storage tanks, collecting basins, process vessels.
2. Sewer pipes, manholes, and lift stations.
3. Digesters, clarifiers.
4. Foundations.
5. Tunnel.
6. Open trenches.
7. Hazardous material handling, decontamination, storage areas.

# Industrial Coatings

## Protective Solutions Using 100% Solids Sprayed On Elastomers

- Bond to a variety of surfaces while curing. Wood, Metal, Concrete and other
- Conform to any shape being applied to. Ability to build any thickness – apply how much
- you need, where you need. Rapid cure – fast turn around. Physical properties tailored to application.



### Protection against:

- Abrasion
- Corrosion
- Impact
- Chemical Exposure
- Noise and Vibration
- Water Penetration
- Slip & Fall



### Applications

- ✓ Truck Beds and related products
- ✓ Transportation
- ✓ Military
- ✓ Blast mitigation; ballistics protection
- ✓ Marine
- ✓ Mining & Materials Handling
- ✓ Industrial Equipment
- ✓ Cooling towers, heavy equipment, etc.
- ✓ Primary & Secondary Containment
- ✓ Flooring
- ✓ Water & Wastewater



# Industrial Coatings (Contd..)

## Samples of industrial coatings



Swimming Pools

Rhino Linings can be coated to any surface viz.. Concrete, metals, wood etc.

The materials are food grade and corrosion resistant also. The data sheets of all materials are available separately on request. The customer can choose the colour as per his choice.



Concrete Tanks



Truck Beds



Concrete structures



Floor Coatings



Floor Coatings



# Lining systems for optimized bulk material handling

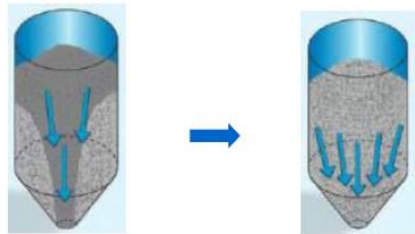
## Matrox lining system

as solution for problems with material flow, corrosion and wear

### Why Matrox lining?

#### ■ Matrox lining works as flow promoter

- extremely low friction coefficient
- sticking is removed / decreased



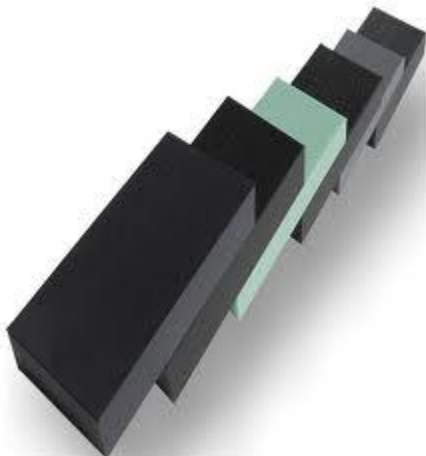
#### ■ Excellent corrosion resistance

- even against strong acids or basis



#### ■ Higher abrasion resistance

- in comparison to e.g. mild/const. steel

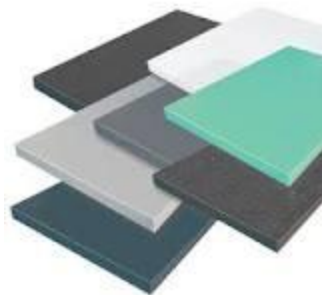


# Lining systems for optimized bulk material handling

## Matrox – more than “just” a liner

- Matrox, offers complete system for solution of problems with material flow:
  - Matrox liner
  - Fixing system (steel/concrete)
  - Welding rod
  - Edge protection
- Technical support:
  - Choice of right material, it's thickness and fixing system
  - Recomendations of necessary changes in silo geometry\*
  - Help with determination of right wall angel needed for mass flow\*
  - Installation made by professional installation companies

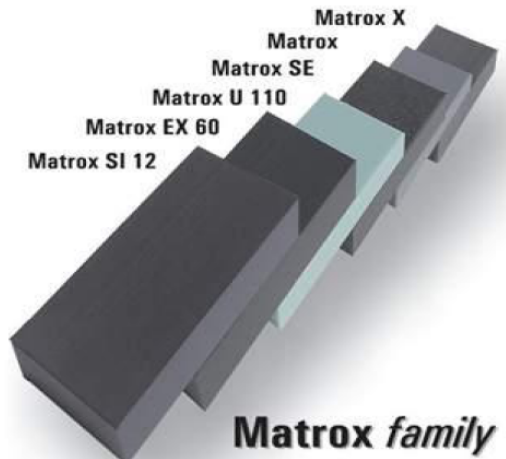
\*In cooperation with third party, properties of handled material need to be measured



# Lining systems for optimized bulk material handling

## Matrox family – solution for your problems

- different applications and handled materials requires different properties
  - therefore Matrox family of liners with different properties was developed



- Matrox
- Matrox X
- Matrox SE
- Matrox FC
- Matrox K 12
- Matrox SI 12
- Matrox U 110
- Matrox EX 60

## Matrox lining for lowest possible friction

Recommended cone wall angles to achieve maximum mass flow for different wall materials

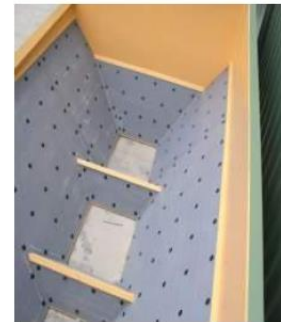
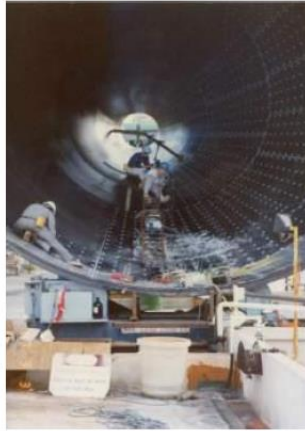
Bulk material	Diameter of cone outlet	Flow rate	Wall material		
			Polystone® Matrox TM	Stainless Steel acc. DIN 1.4301	UHMW-PE
PRB Coal with 29 % moisture	2 ft. (610 mm)	continuous	56°	81°	62°
		after 3 days rest	60°	81°	63°
	8 ft. (2,440 mm)	continuous	55°	78°	60°
		after 3 days rest	59°	78°	62°
PRB Coal with 36 % moisture	2 ft. (610 mm)	continuous	59°	88°	64°
		after 3 days rest	65°	90°	68°
	8 ft. (2,440 mm)	continuous	57°	76°	58°
		after 3 days rest	62°	78°	63°

Summary of wall friction tests results from Jenike & Johanson, PRB is a sub-bituminous coal mined in USA, degrees are measured from horizontal.

# Lining systems for optimized bulk material handling

## Area of applications:

- Bunkers / silos
- Truck beds
- Chutes
- Hoppers
- Excavator shovels
- Wagons
- Cargo ships



## Experience with following materials:

- coal
- clay
- calcite
- powder chemicals
- limestone
- synthetic gypsum
- kaolin
- iron ore
- copper ore
- cereals
- hot asphalt
- ...and more



# Lining systems for optimized bulk material handling

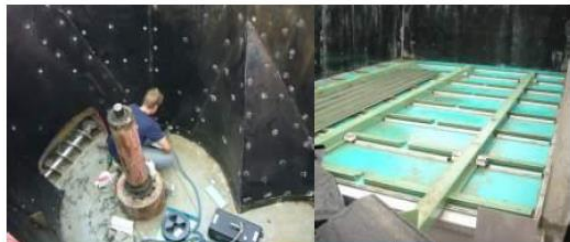
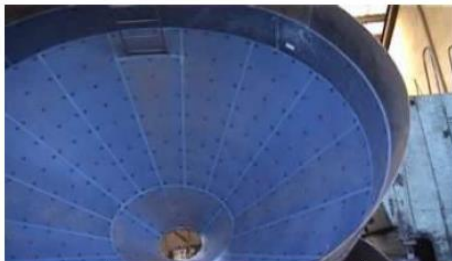
## Coal is our fuel...

- Biggest application area for Matrox lining is coal handling industry
- Matrox lining is used in whole transport chain – from mining of coal in coal mine up to burning of coal in coal power plant or steel plant.(silos, bunkers, waggons, hoppers, buckets, truck beds...etc).
- Thanks to optimal flow of coal in silo problems with self-ignition can be avoided



## Everything what sticks or is aggressive...

- Matrox offers also optimal solution for all sticky or aggressive bulk solids
  - Hoppers & silos in concrete/cement industry
  - Silos & storage systems in biogas plants

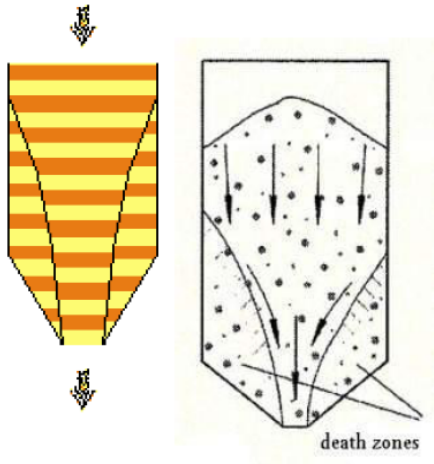


# Lining systems for optimized bulk material handling

## Bunkers and silos lining – problems in silo

### ■ Problem – tunnel flow

material flows just above opening



### ■ Solved problem – mass flow

condition – low friction between walls and handled material which can be reached with Matrox lining



## Bunkers and silos lining – problems in silo

### ■ Problem – bridge building

silo is jammed



### ■ Problem – rat holes building

material stay in silo

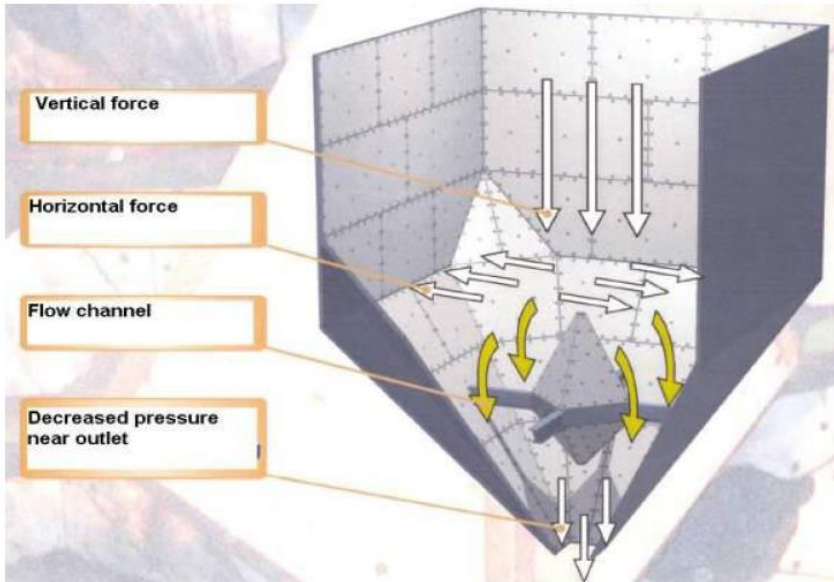


- Solution is optimization of silo geometry accompanied with Matrox lining

# Lining systems for optimized bulk material handling

## Bunkers and silos lining – problems in silo

- Not just liner but complex solution is usually needed



Combination of Matrox® lining system, optimisation of corners and special insert - Crystalen®. A complete solution used by one of our customers.

## Lining system

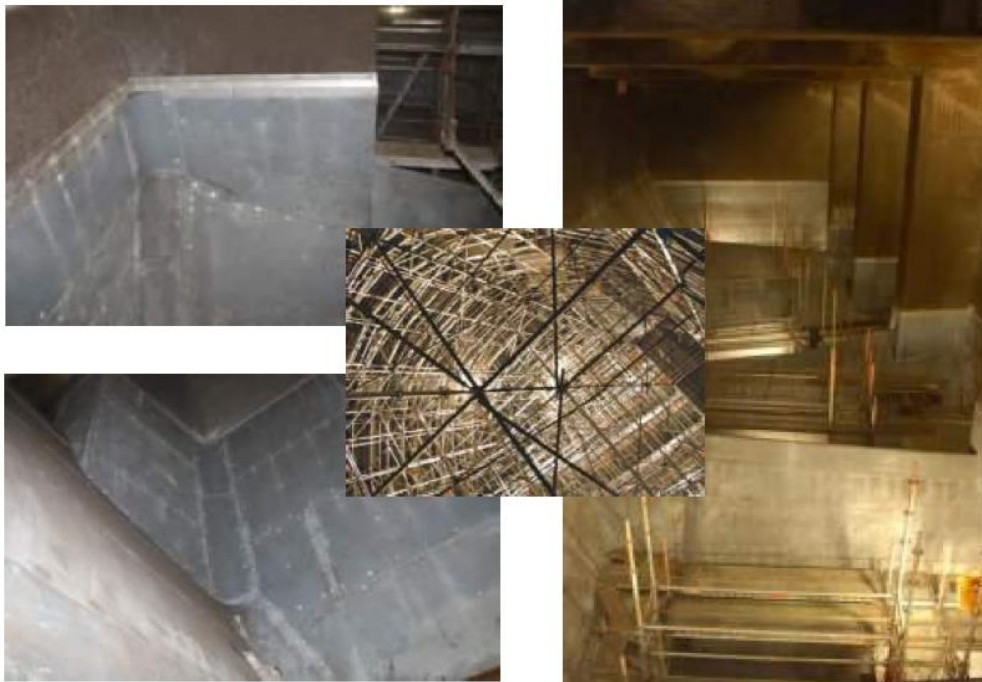
- Not just liner but whole lining system is important:
  - fixing system
  - solved details like sheets layout and their joints, edges protections...
- Underestimation of complex solution with all details leads to significantly lowered life time of the liner

# Lining systems for optimized bulk material handling

## 1. Case – Silo lining

- Place: Germany, RWE coal power plant
- Date of installation: 2010, 2011
- Handled material: brown coal
- Lined equipment: silo – 2500 + 2000 m<sup>2</sup>
- Problem: sticking of material
- Solution: lining with Matrox, thickness 12 mm

## 1. Case – pictures from installation side

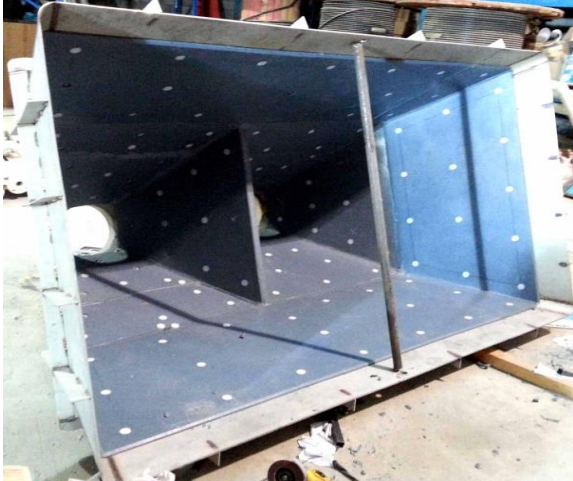




# Lining systems for optimized bulk material handling

## 2. Case – hopper lining

- Place: Italy, open-cast mine
- Date of installation: december 2007
- Handled material: clay and stones
- Lined equipment: hopper before mill
- Problem: sticking of material, blocking of the hopper
- Solution: lining with Matrox, thickness 20 mm



**HOPPER LINING  
IN KSA**

## 2. Case – pictures from installation side



# Corrosion & Chemical Resistant Valves & Actuators



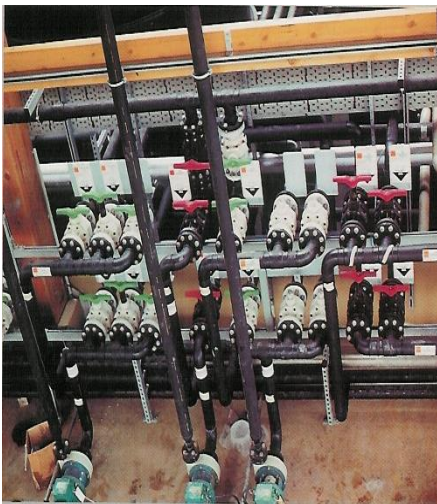
Storage of chemicals



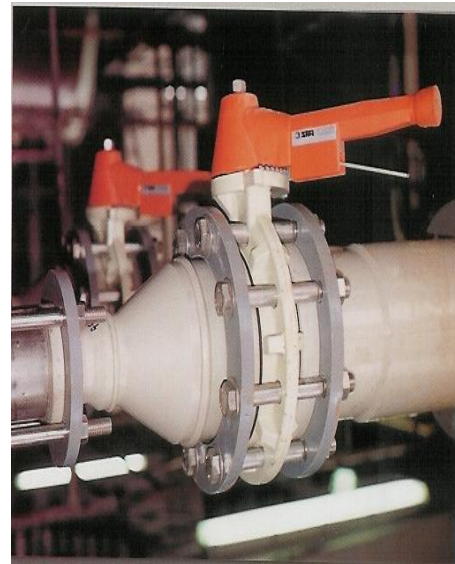
- **Offering you**
  - Advanced Technology
  - High Standard of Quality
  - And the guarantee of a leading manufacturer for a custom designed solution to your corrosive requirements
  - Dealing with GRPP, PVDF, PVC, PP 2,3 & 4 way ball valves



Water treatment



Chemical Distribution



Chemical Plant

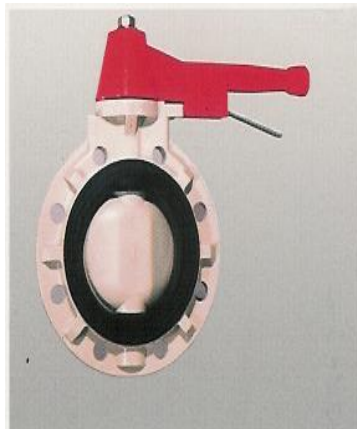
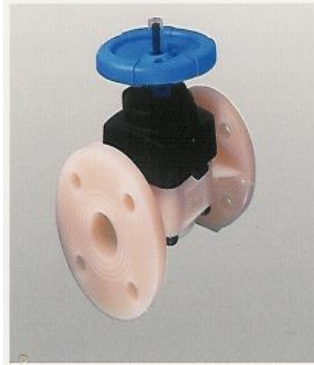
# Applications of Valves



Surface Treatment



Chemical Production plant



# Electrofusion Fittings and Jobs

We undertake the job of HDPE, PP, PVDF, FRP piping and all thermoplastic welding jobs.



# Advantegous of HDPE & PP Linings

- **Used to put the linings of trenches of all types of chemical plants.**
- **Concrete protective liners of HDPE,PP,PVDF, which gives high quality solution for long term protection against chemicals, acids etc.**
- **HDPE liners for the sewage pipes.**
- **Storage water**
- **Environmentally hazardous area**
- **Lining of Industrial storage tanks**
- **Corrosion protection of bridge pillars**
- **Lining of swimming pools**



- ▶ **Applicable for a wide range of structures.**
- ▶ **Absolute mechanical anchoring of plastic liner in the concrete**
- ▶ **High impact and shear resistant**
- ▶ **Chemical resistant**
- ▶ **Temperature range is up to 100 degree**
- ▶ **Reduction of Hydro-sulphurous acid.**
- ▶ **Resistant against chlorination**



# Application in Education , Leisure & Advertisement



## Polystone – Polar

Polystone polar is UHMW sheets prepared by Roechling for ice-skating rinks of theme parks. These sheets are resistant to the effects of weather, wind and UV radiation and are therefore very durable for a long time. Art-ice ice-skating rinks made of Polystone are not subject to adye the sheets any colour required.

### Advantageous:-

1. Very low energy expenditure.
2. Resistant to the effects of weather, wind and UV radiation, therefore very durable.

Applied Venue: Holiday Centre Dankern Castle, Haren, Germany



## Polystone Play-Tech

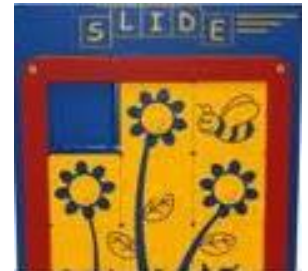
The single colour or coextruded two colour polystone plastic panel from Rochling is a long running product. The panels can be used to make toys such as imaginative toy castles, rocking horses or slides for indoor and outdoor playgrounds.



Polystone play-tech is TUV NORD CERT GmbH certified in accordance with the relevant European toy standard DIN EN 71-3,-9,-10,-11. The main focus of the testing is onharmful constituents

and organic/chemical compounds such as solvents, softeners and colourants that may be released by the toy and could be ingested by children via mouth., skin or eye contact or by inhaling.

Many playgrounds will soon be looking more colourful. This will be taken care by Polystone. Play-Tec with an extended range of colours, which is available ex stock.



This material is used to make Height panels, Fun toys, shop fronts Learning boards, Planters and play boxes.

This is intended to increase learning for children a combination of adventure and education in a range of exciting products.

### Advantages

1. Resistance to scratches and vandalism.
2. Weather resistance.
3. Fade resistant and UV stabilised
4. Easy to clean and handle
5. No moisture absorption

# PVDF, PP, PE & PVC Piping, Exhaust systems, & customized products Supply and installation

## POLY PROPYLENE PIPING & EXHAUST SYSTEM



We supply and install the complete range of PP piping , exhaust systems and fabricate the customized PP installations required for the industrial , chemical and petrochemical applications. The photographs shows the recent installations in KSA .

# PVDF, PP, PE & PVC Piping, Exhaust systems, & customized products Supply and installation

## POLYETHYLENE PIPING & EXHAUST SYSTEM



We supply and install the complete range of PE piping , exhaust systems and fabricate the customized PE installations required for the industrial , chemical and petrochemical applications. The photographs shows the recent installations in KSA .



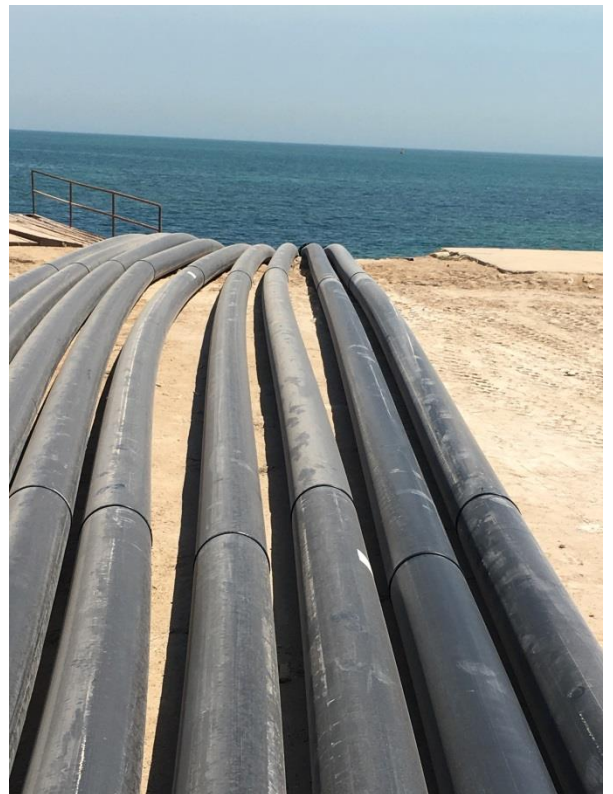
# HDPE PIPE INSTALLATIONS



HDPE Pipe installation near Kafji Border  
For marine applications



HDPE Corrugated Pipe supply & installation  
For water and waste water applications



Supply and installation of HDPE Pipes corrugated pipes etc  
for all types of applications

# PVDF, PP, PE & PVC Piping, Exhaust systems, & customized products Supply and installation

## POLY VINYLIDENE FLUORIDE (PVDF) PIPING SYSTEM



PVC Panel Board for  
chemical applications

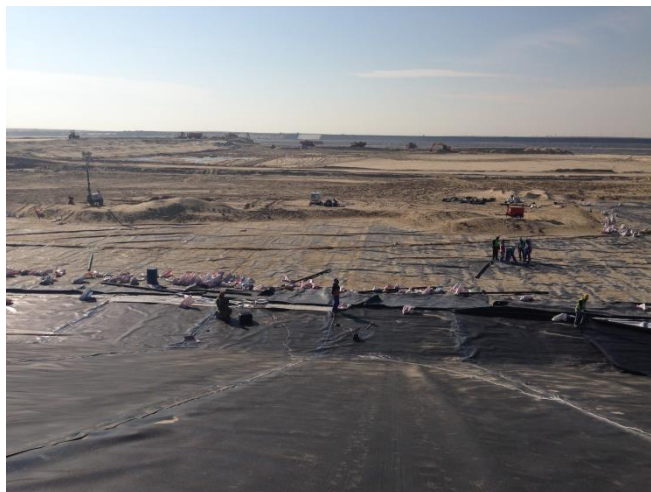


UHMW Panel Board  
and enclosures chemical applications

We supply and install the complete range of PVDF piping and fabricate the customized PVDF products required for the industrial, chemical and petrochemical applications. We also fabricate, PVC, UHMW panel boards and enclosures for chemical applications

# HDPE & GCL LINING Supply & Installation

The supply and installation (Lining) of HDPE & GCL materials on Lagoons viz. evaporation ponds, waste water ponds, chemical spillage areas and waster disposal areas are one of our major activities. The pictures given below shows the recent installation in KSA.



# HDPE & GCL LINING Supply & Installation



Supply & Installation of HDPE liner in Leaching pads



# Structured Cabling Solutions

We deal with all types of components for the networking



Networking Jobs



Power Distribution



Cabinets



Fibre  
Optic Products



Active Products

# PRODUCT RANGE

## STEEL TUBES & FITTINGS

We supply all types of CS tubes, pipes & fittings,  
SS tubes & fittings.



SS tubes



SS Fittings



CS tubes & Pipes



SS, BRONZE, Rods



SS tubes

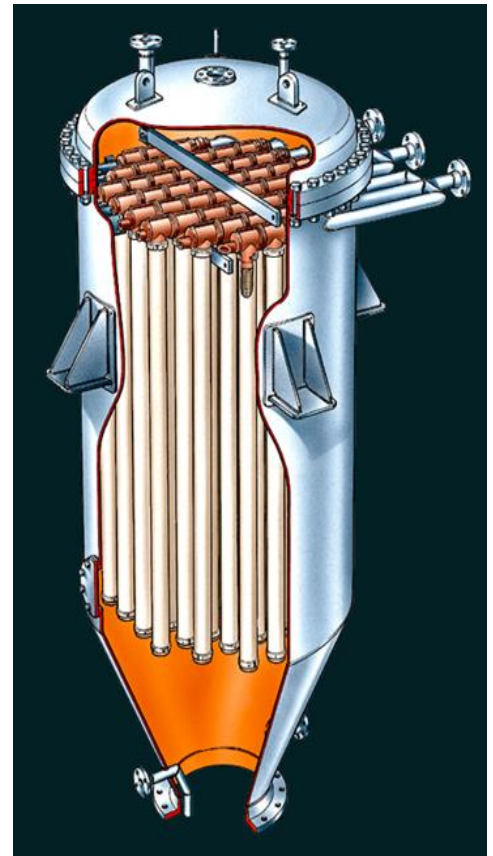
# FUNDABAC®-Filter

We are also dealing with FUNDABAC Filters which is used in many applications viz:-

- 1) Chemical industry
- 2) Steel industry
- 3) Petrochemical industry
- 4) Pharmaceutical industry
- 5) Food industry
- 6) Environmental protection

## APPLICATIONS

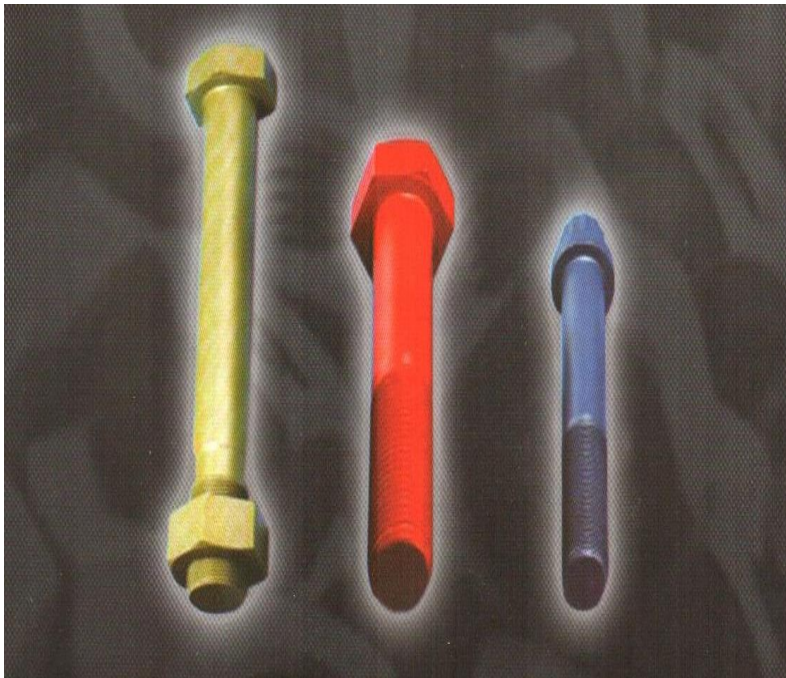
- Adipic Acid
- ABS
- Agrochemicals
- Aluminum
- Aniline (separate)
- Biodiesel (separate)
- C9 Resin
- Chlor Alkali
- Copper foil production
- Epoxy
- Flue Gas / Tunnel (separate)



## APPLICATIONS

- Gasification / Flue Gas (separate)
- LCD Production
- Lithium / Batteries
- Pharma
- Polyurethanes (Polyols, TDA, PO)
- Silane production (separate)
- Silicium slicing
- Galvanic plating (tin, zinc)
- Sweeteners
- TiO<sub>2</sub>

# FASTENERS

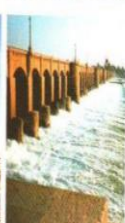
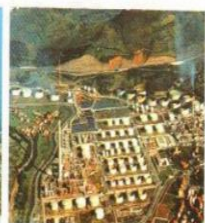


## USERS

Petrochemicals

Refineries

Onshore & Offshore Oil Rigs and Platforms



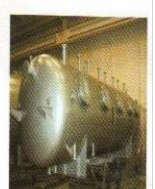
Desalination Plants

Oil & Gas

Power Plants

Water Works

## APPLICATION







We are growing! Discover the benefits of  
working with

**GLOBAL TECHNICAL RESOURCES**

# Contact US

## **GLOBAL TECHNICAL RESOURCES**

**514/1, Mallappally (W) P O**

**Kerala, India, Pin:- 689 585**

**Ph:- +91-469-2682320**

**Mob:- +91 9747955791**

**E-mail:- [info@globaltech.net](mailto:info@globaltech.net)**

**jeremie@globaltech.net**

**www.globaltech.net**